



drainage cell

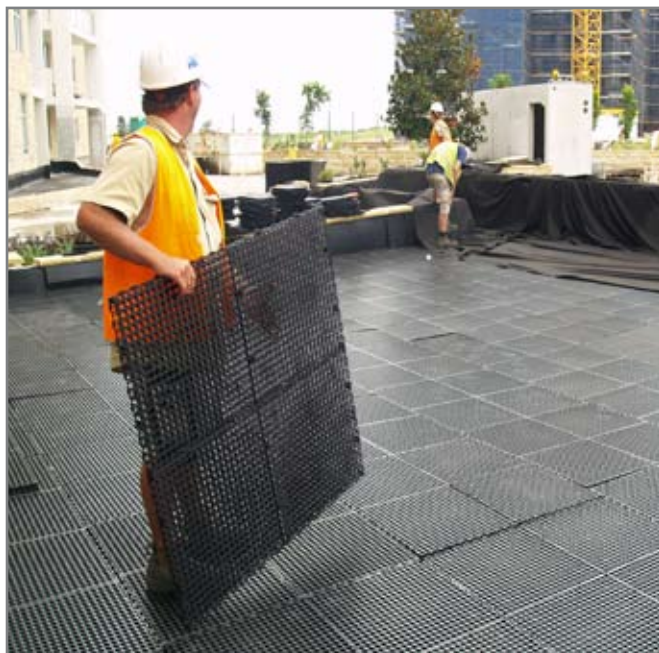
modular horizontal drainage



30mm drainage cell

AUSDRAIN 30mm drainage cell provides a permanent, structural and non-clogging void between the building structure and the soil profile that will not collapse or distort. The 30mm void enables a direct flow of water to designated outlets resulting in superior drainage efficiency compared to conventional systems.

| applications | features | benefits |
|--|--|--|
| <ul style="list-style-type: none"> • Planter boxes • Roof gardens • Podiums • Paving • Retaining walls • Civil works • Sports fields • Under slab drainage | <ul style="list-style-type: none"> • High compressive strength • Open structure • Durable • Lightweight • Supplied in 1m x 1m panels • Totally inert • Made from recycled plastic | <ul style="list-style-type: none"> • Trafficable • High flow rate • Long life expectancy • Easy to handle • Quick to install • Chemical and bacteria resistant • Environmentally friendly |



AUSDRAIN 30mm drainage cell is the most effective and efficient drainage solution for planter boxes, roof gardens, podium landscaped areas and most horizontal drainage applications.

It features high compressive strength and is lightweight reducing weight on the underlying structure by 98% compared to gravel. In addition, there is a 5:1 reduction in the drainage medium height enabling greater scope for soil depth and plantings.

The drainage cell in combination with a geotextile fabric acts as the protection layer for the underlying

waterproof membrane and provides ventilation for concrete slabs. The geotextile fabric is placed over the drainage cell and combined with a layer of washed river sand, filters the water eliminating staining caused by gravel, stone and soil.

AUSDRAIN 30mm drainage cell is supplied in easy to handle 1m x 1m panels making installation fast, saving valuable time and labour on large scale projects. The panels can also be easily interlocked for vertical installation against planter boxes and retaining walls.

product specifications

technical data

30mm drainage cell

| | |
|-----------------------|------------------------|
| Depth: | 30mm |
| Width: | 500/1000mm |
| Length: | 500/1000mm |
| Weight: | 3kg/sqm |
| Surface void: | >65% |
| Volume void: | 30 litres/sqm |
| Compressive strength: | >1500kPa |
| Drainage capacity: | >14400 litres/h/sqm |
| Service temperature: | -30c + 120c |
| Material: | Recycled polypropylene |

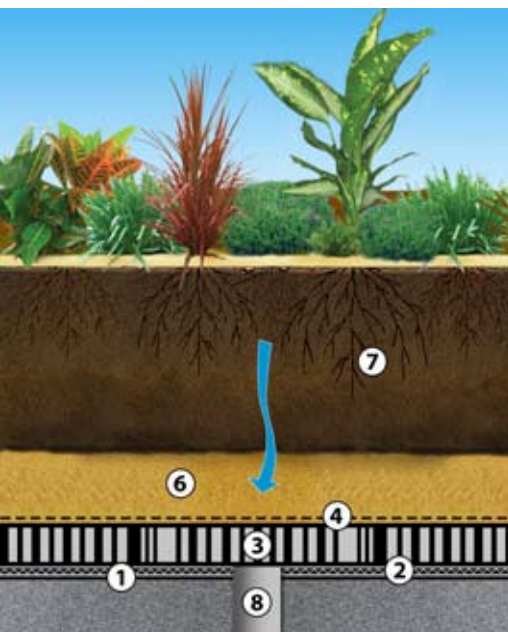
Filter fabric

| | |
|---------------|--------------------------------|
| Thickness: | 1.2mm |
| Width: | 2.0/4.0m |
| Pore size: | .150mm |
| Permeability: | 0.29cm/seg |
| Permittivity: | 2.7 seg ⁻¹ |
| Flow rate: | 6925 litres/min/m ² |
| Material: | Polypropylene |

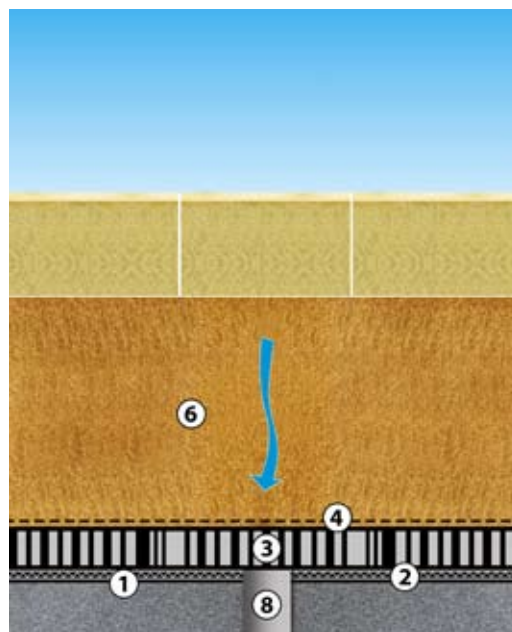
installation procedure

1. Place the drainage cell over the surface of the membrane and butt together (interlocking is not required). For additional protection a layer of 3mm protection board is recommended under the drainage cell.
2. Cut the drainage cell where required using a hand or circular saw.
3. Place the filter fabric over the drainage cell allowing for a 150mm overlap at each seam. Allow for additional fabric to cushion the edges of the drainage cell around the perimeter against the waterproof membrane and walls.
4. Install the drainage cell vertically to the walls of the planter boxes if required and cover with filter fabric. Allow sufficient overlap to the horizontal sections.
5. Lay a 50-100mm layer of washed coarse river sand to act as a filtration layer over the fabric.
6. Lay the soil profile to the required depth. Please note that a minimum of 300mm of cover is required before allowing vehicles and machinery to traffic over the surface.

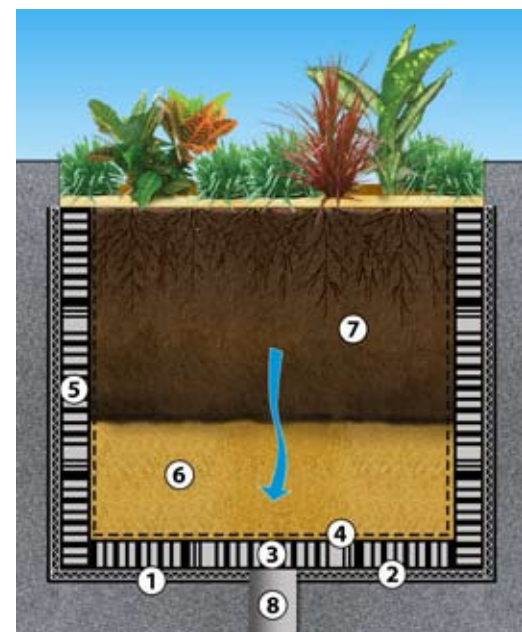
Roof Garden



Paving



Planter Box



- 1 Waterproof membrane
- 2 Protection board
- 3 Drainage cell
- 4 Geotextile fabric

- 5 Drainage cell
- 6 Coarse washed river sand
- 7 Soil mix
- 8 Outlet pipe



Distributed by: HIDROSFERA S.A
Bogotá - Colombia
contacto@hidrosferasa.com

Manufactured from 100%
environmentally friendly recycled
plastics

For more in-depth information
about AUSTRAIN™ and the products
the company provides contact:

T 61 2 9929 7650
F 61 2 9929 7655
E enquiries@ausdrain.com

PO Box 164
Cammeray NSW 2062
Australia

1300 AUSTRAIN (1300 287 372)
(Toll free within Australia)

or visit
www.ausdrain.com

Disclaimer

2008 Australian Drainage Modules Pty Ltd. All reasonable care has been taken in compiling the information in this brochure. The details in this brochure are intended only as a guide in specifying and installing AUSTRAIN™ products. It is the customers responsibility to ensure that each product is suitable for its intended purpose and that the actual conditions of use are suitable. AUSTRAIN™ assumes no responsibility for the specification and/or installation of its products or for improper reliance upon or misuse of the data herein. Due to continuous product development AUSTRAIN™ reserves the right to change product design and/or specifications without notice.

Australian Drainage Modules Pty Ltd
Trading as AUSTRAIN™